

1. Table of Contents (This Page)

Created on Thu Mar 10 23:32:46 2011

2. component

3. solder

4. plated-drill

5. componentmask

6. soldermask

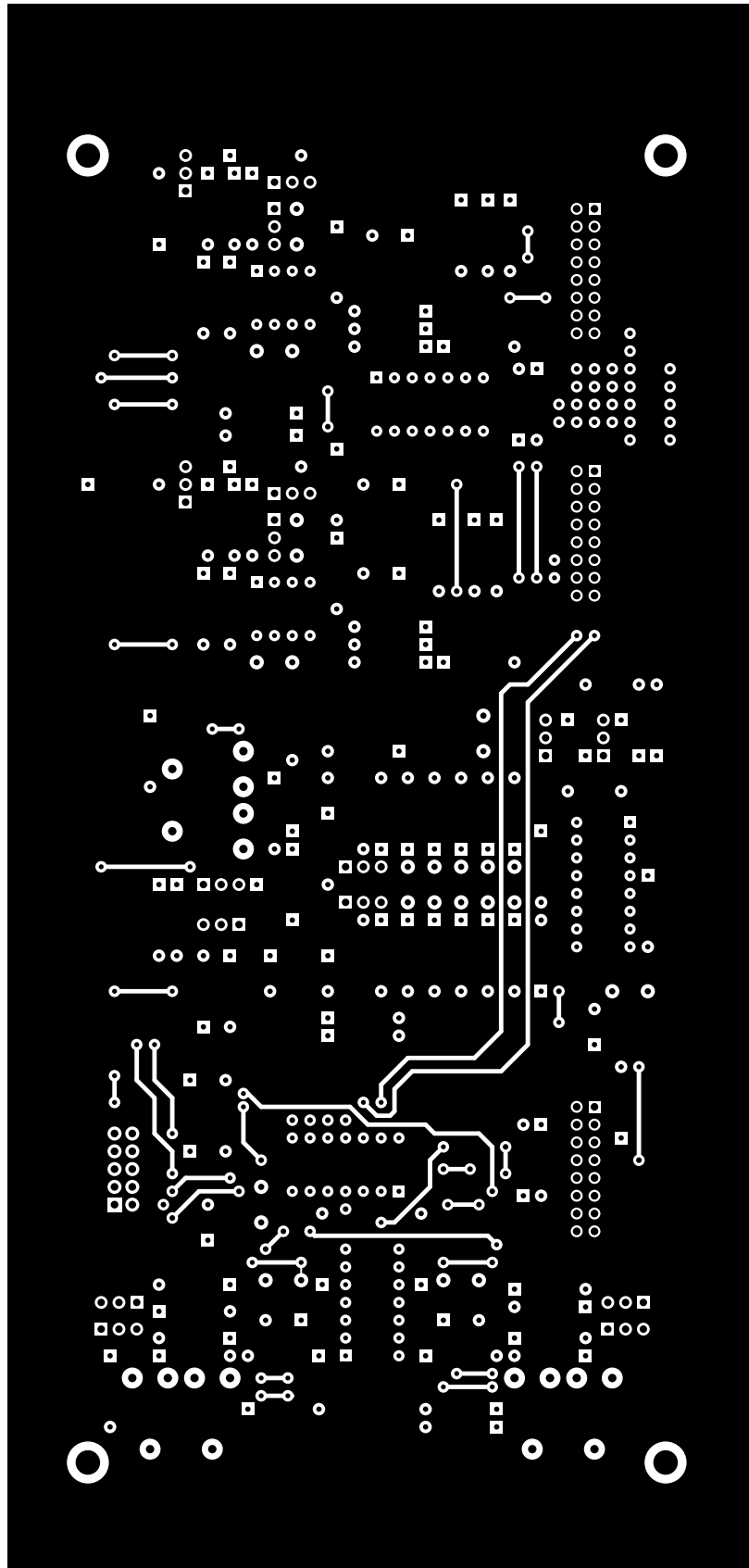
7. topsilk

8. bottomsilk

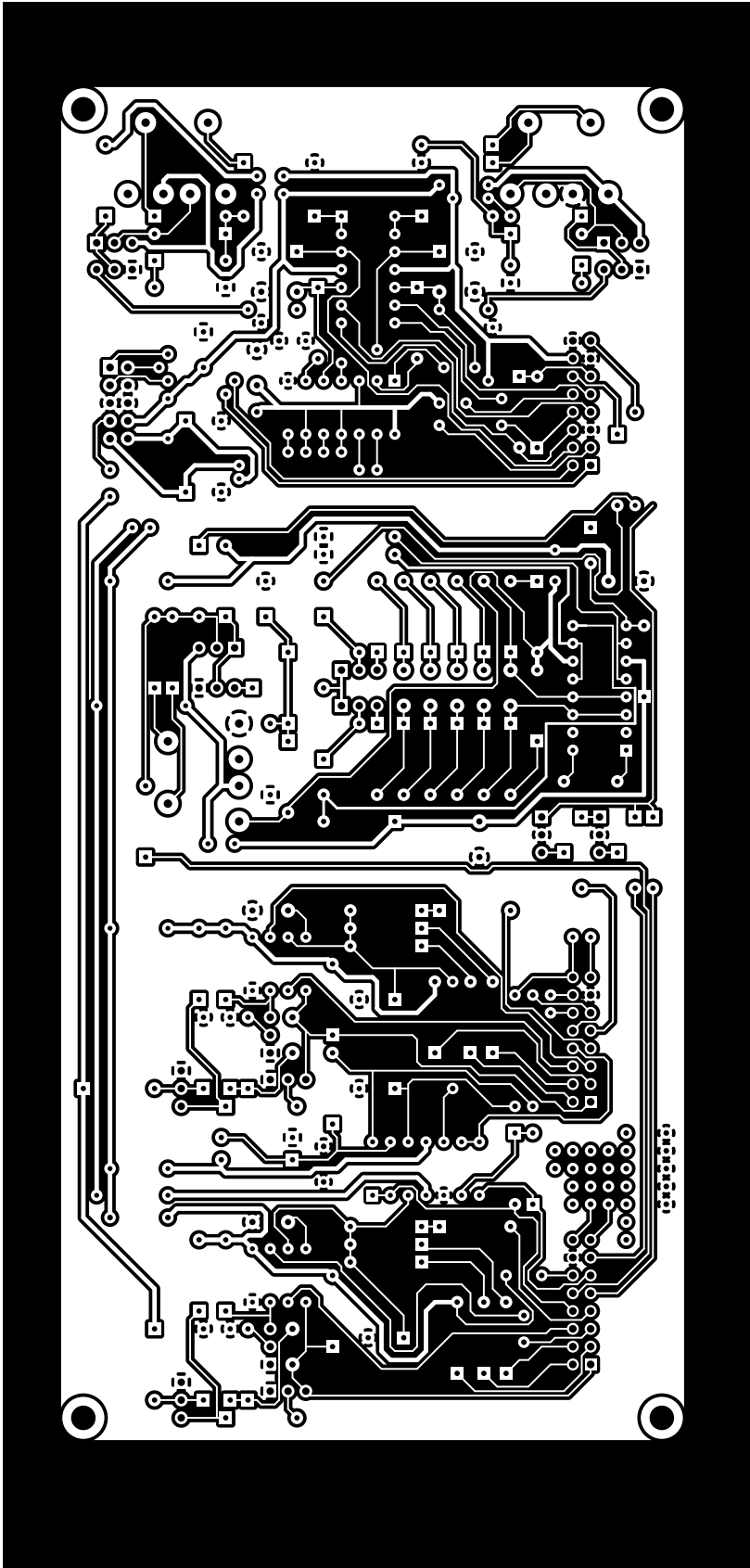
9. topassembly

10. bottomassembly

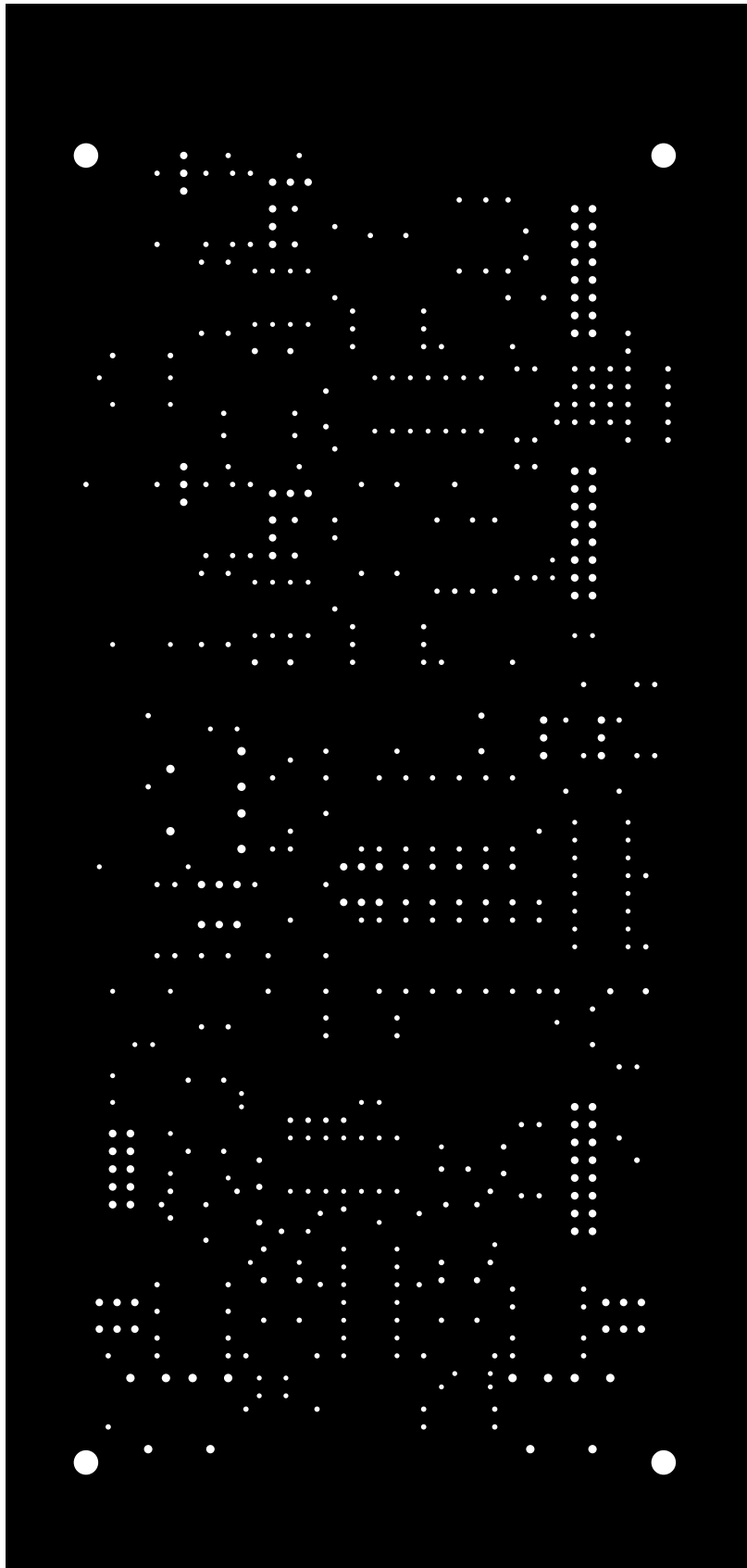
11. fab



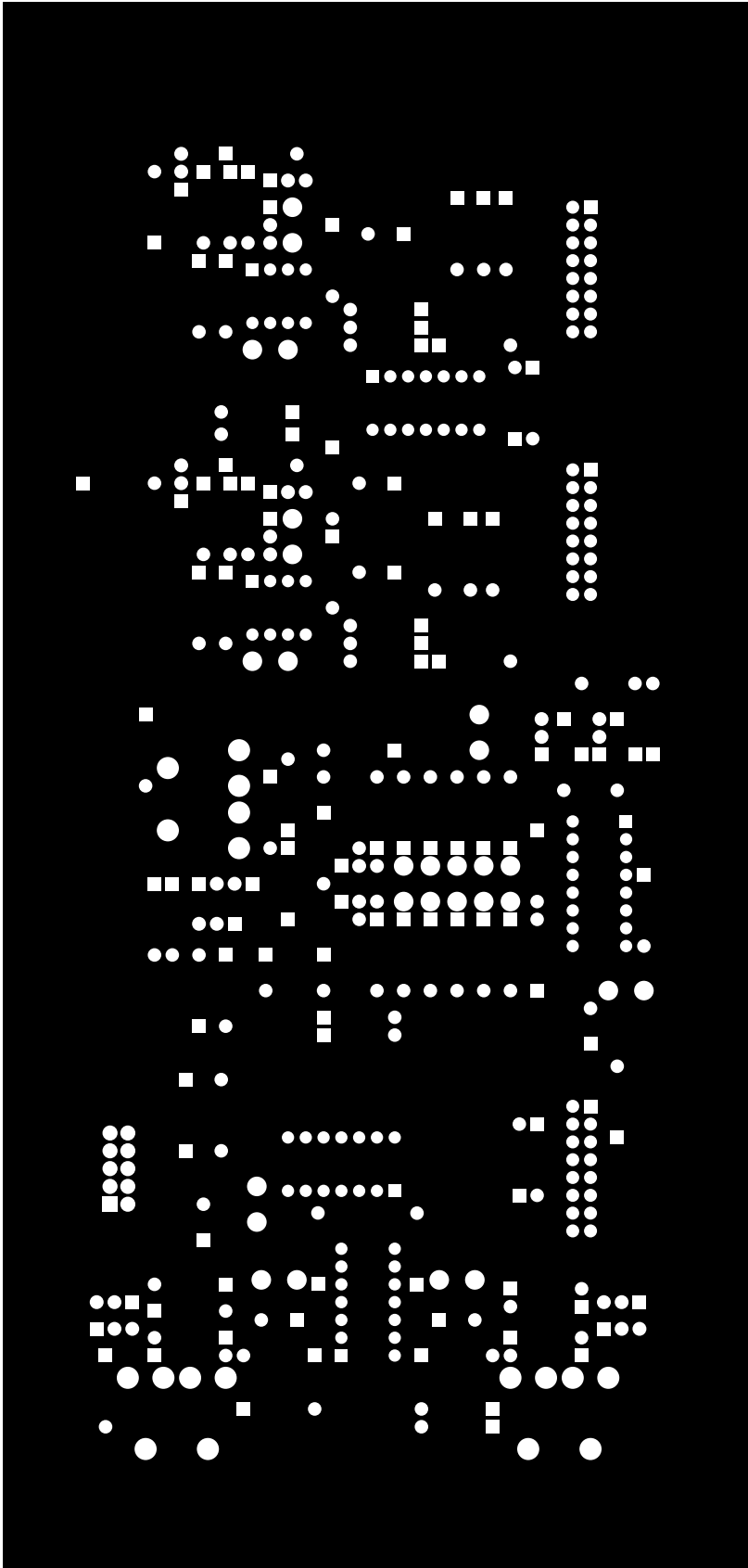
front (mirrored), scale = 1:1.000
pcb/main.pcb



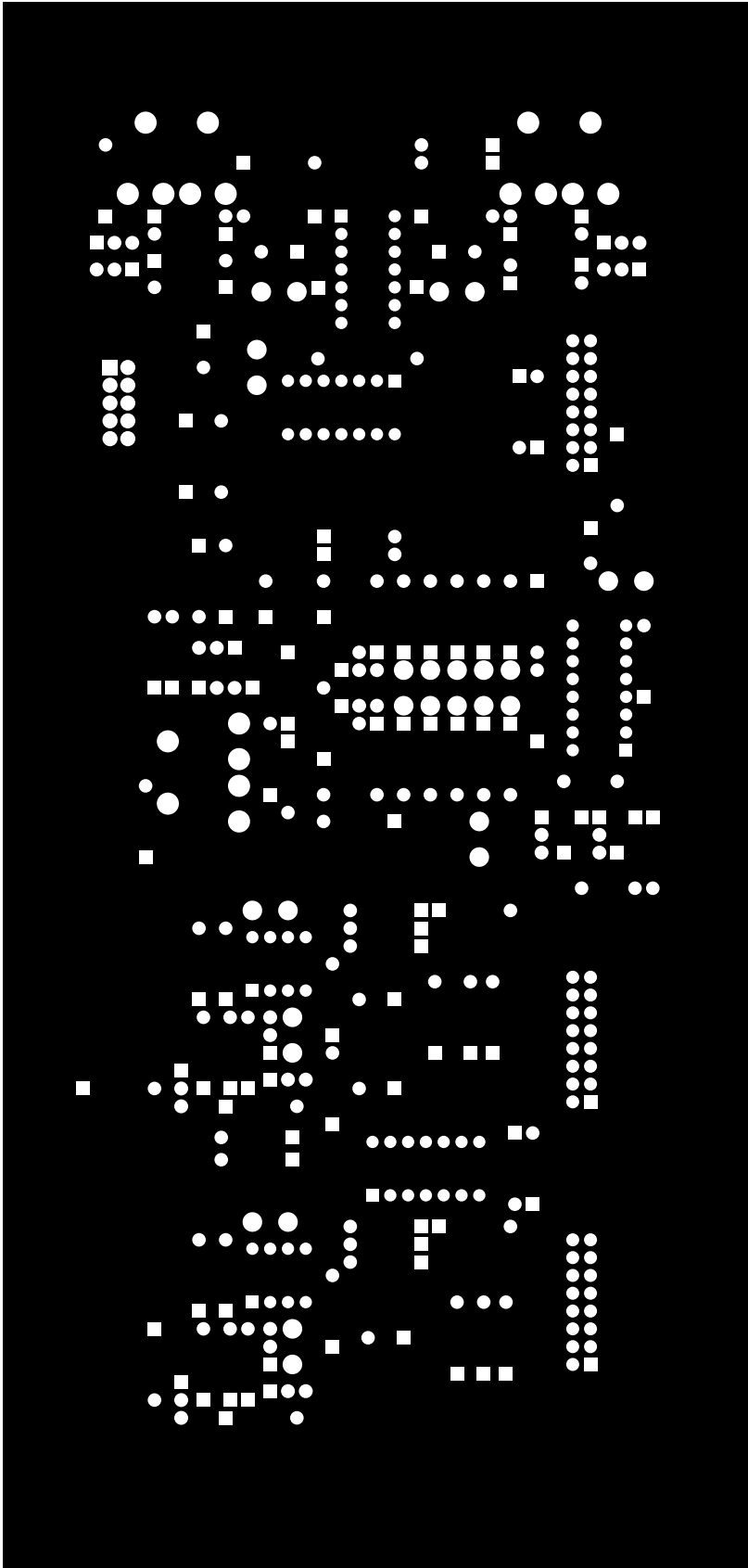
back, scale = 1:1.000
pcb/main.pcb

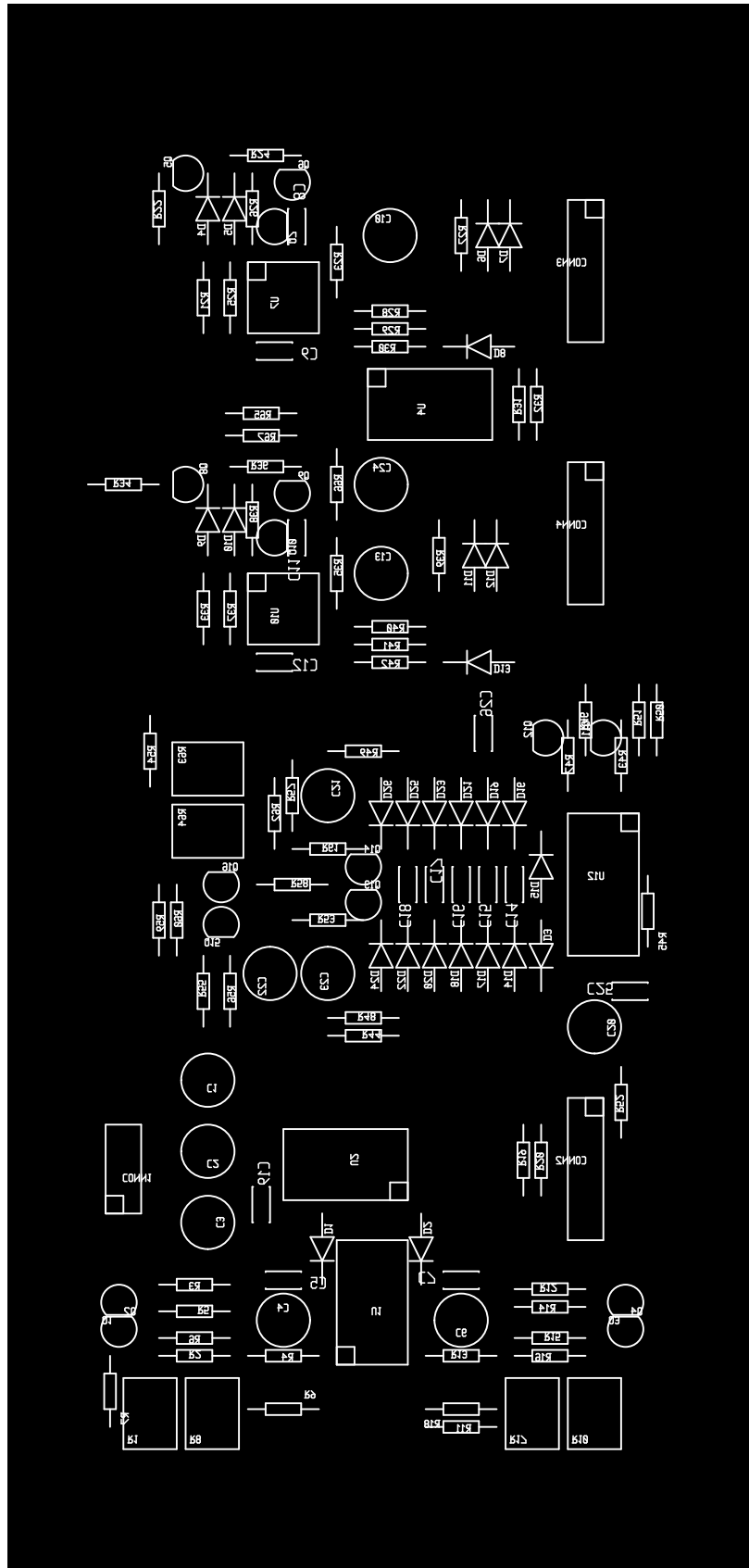


plated-drill (mirrored), scale = 1:1.000
pcb/main.pcb

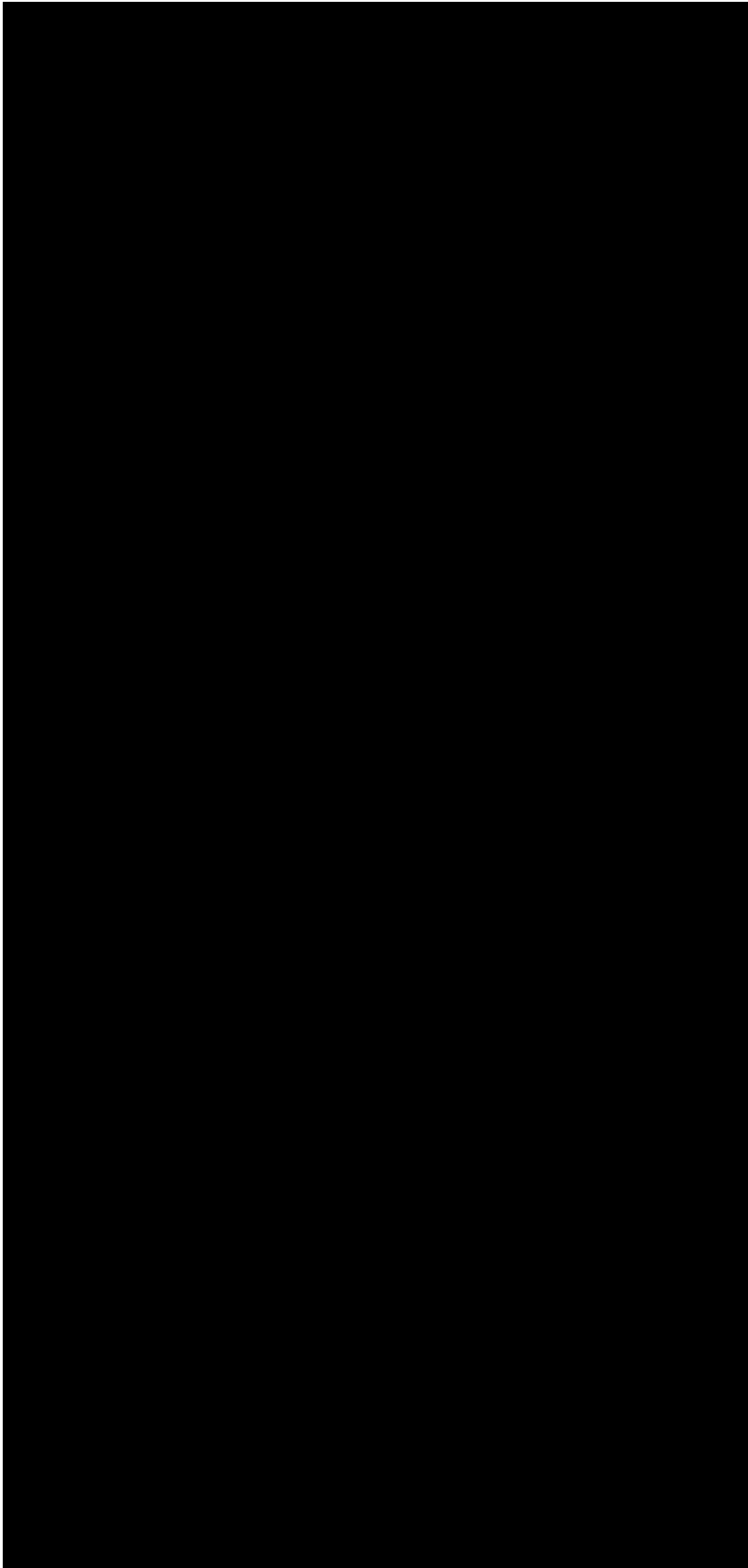


frontmask (mirrored), scale = 1:1.000
pcb/main.pcb

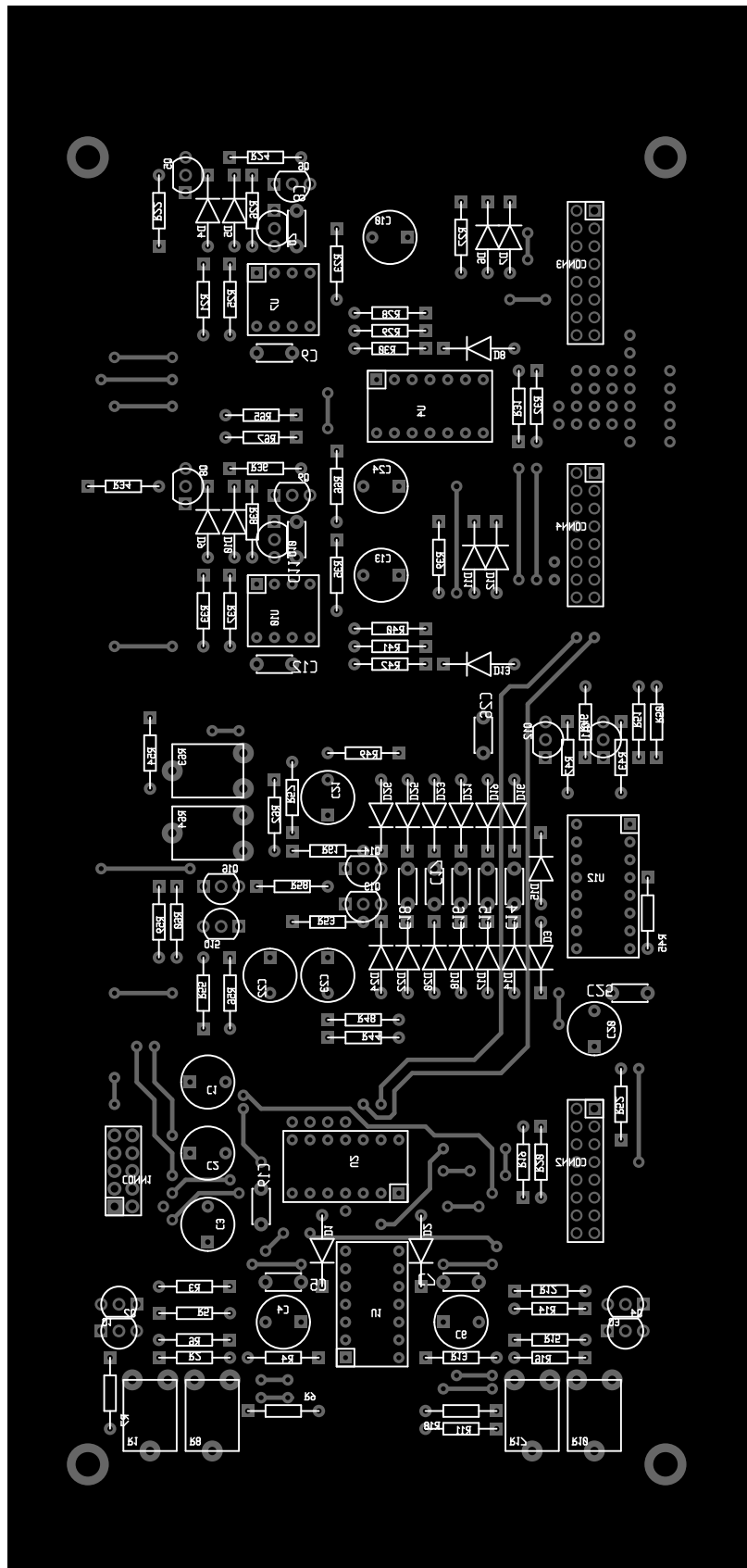




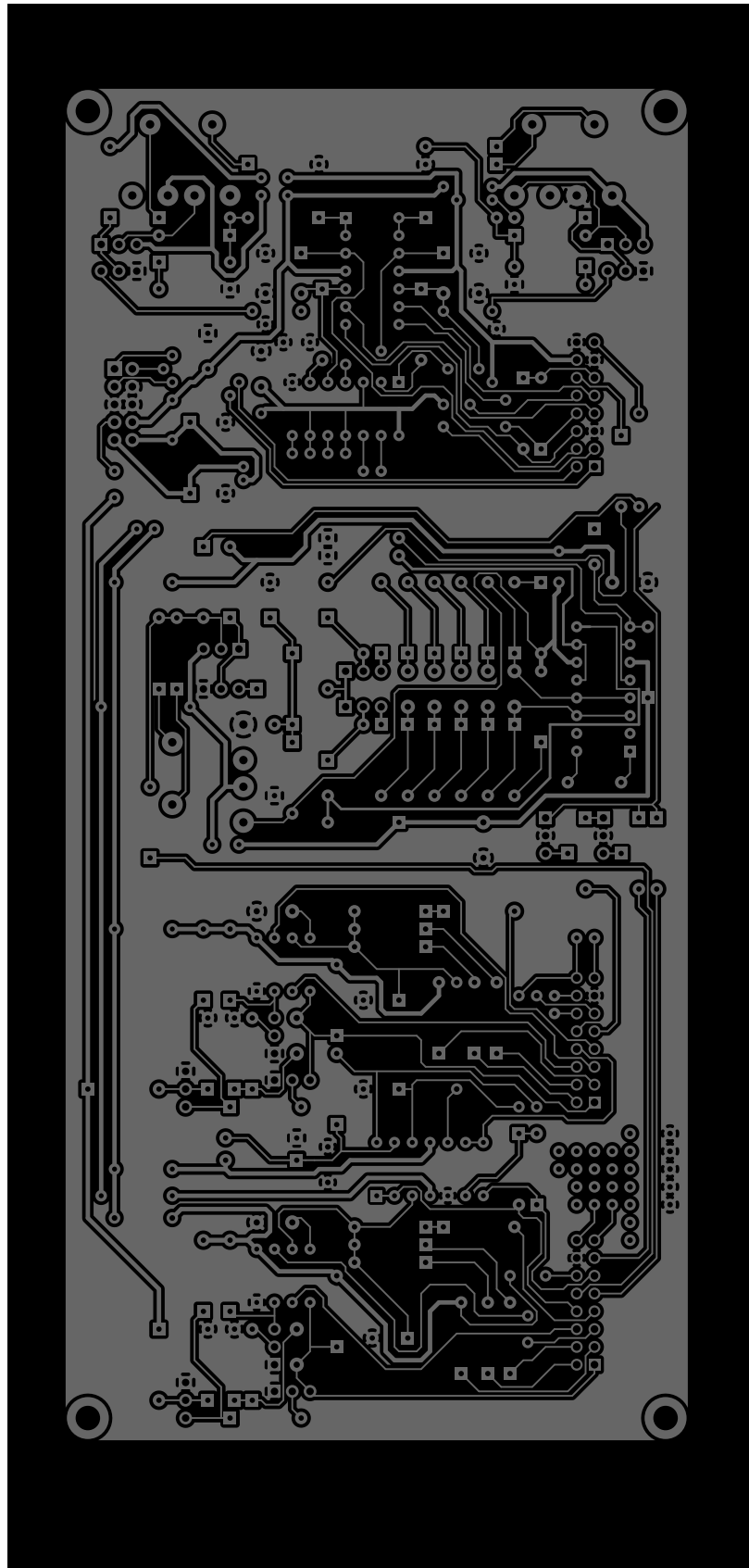
frontsilk (mirrored), scale = 1:1.000
pcb/main.pcb



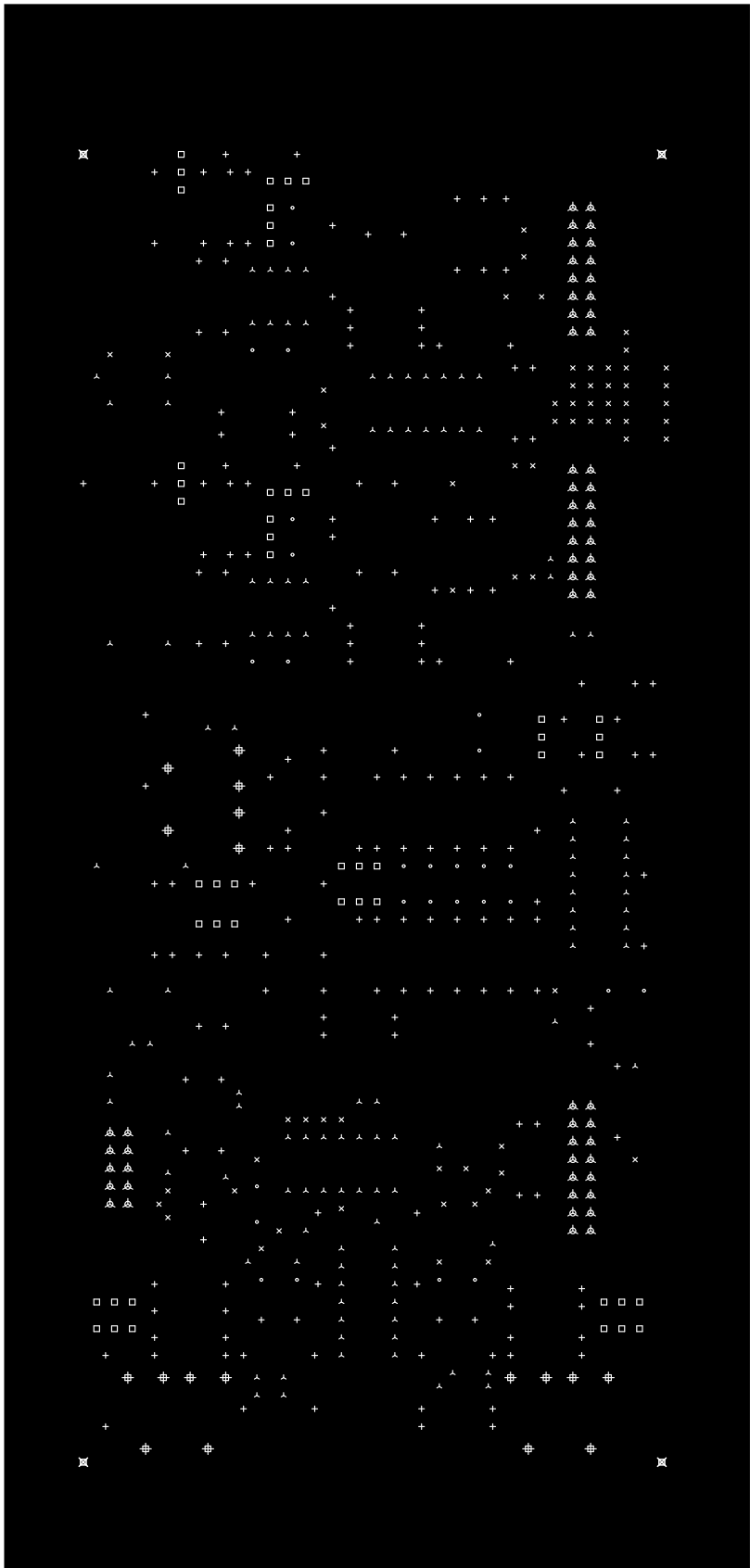
backsilk, scale = 1:1.000
pcb/main.pcb



frontassembly (mirrored), scale = 1:1.000
pcb/main.pcb



backassembly, scale = 1:1.000
pcb/main.pcb



fab (mirrored), scale = 1:1,000
pcb/main.pcb