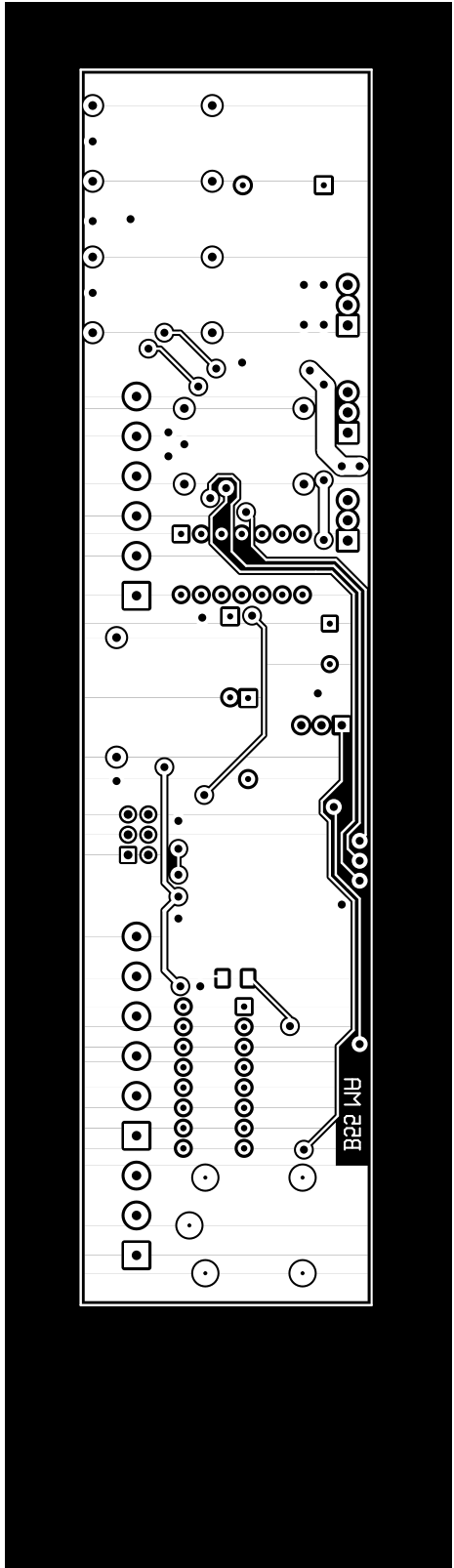
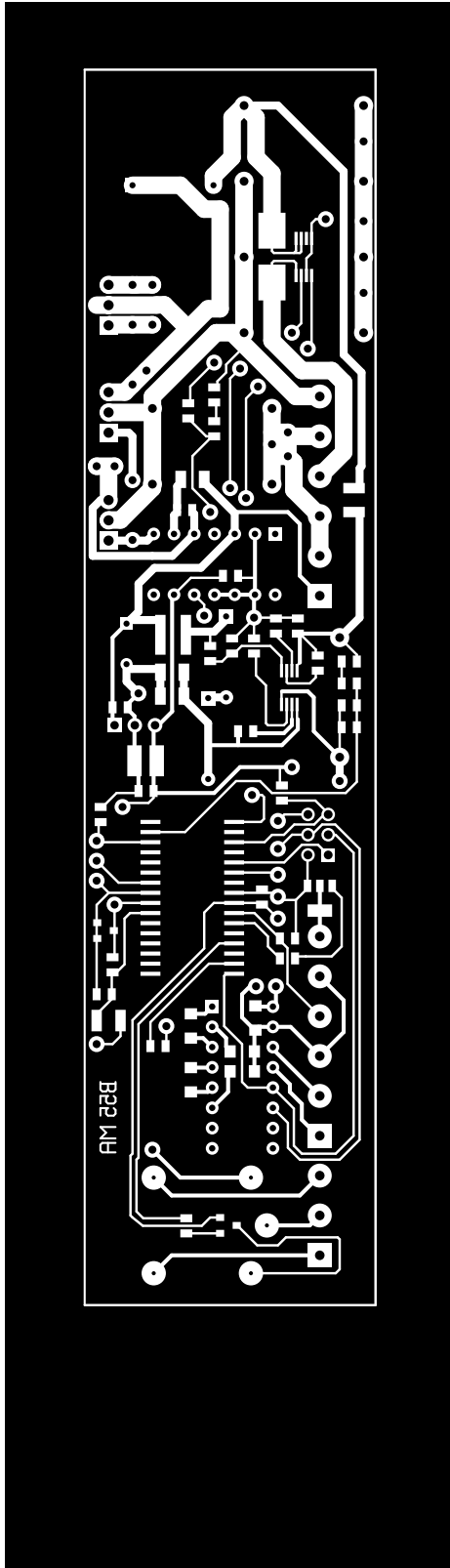
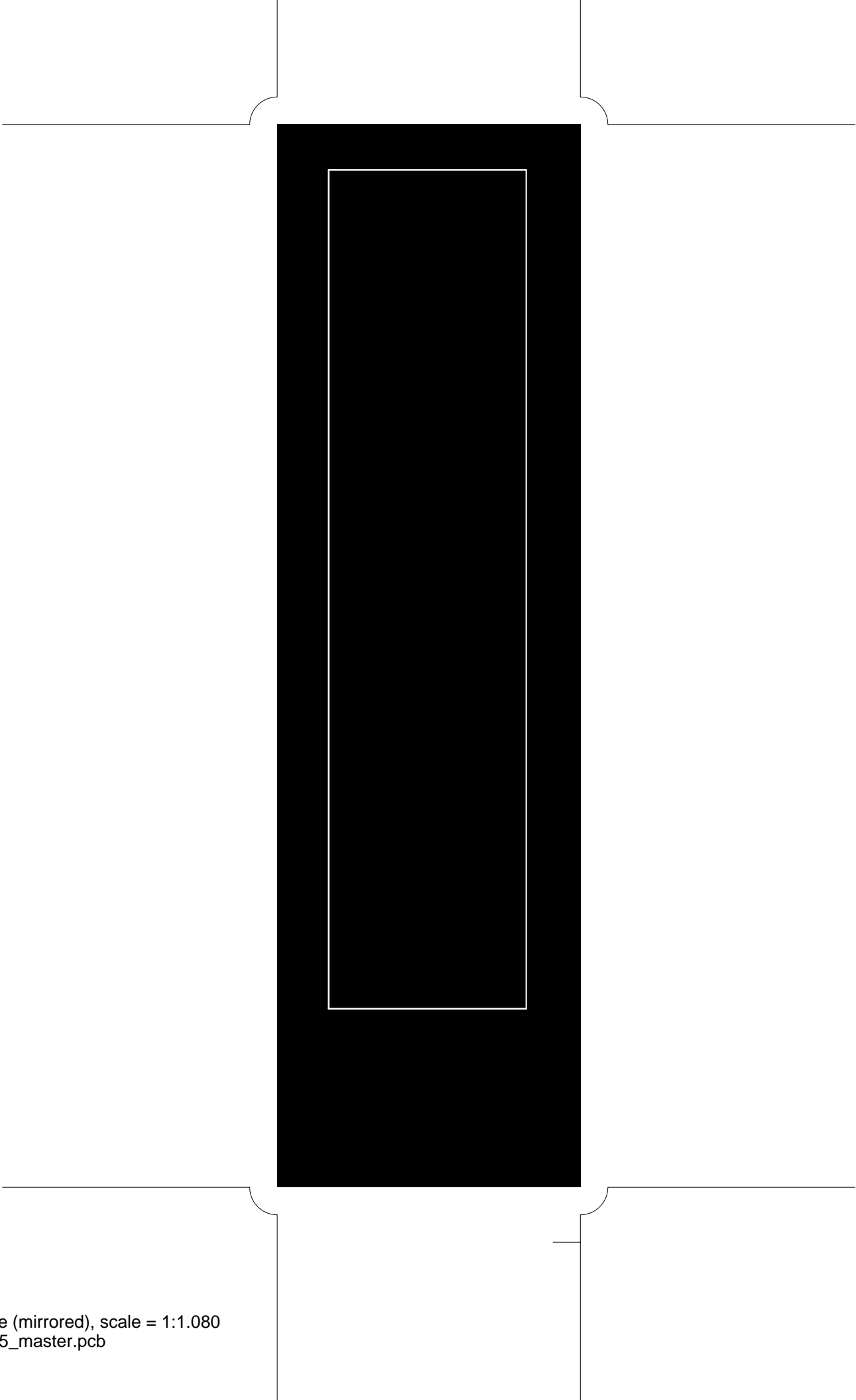


2. component
3. solder
4. outline
5. componentmask
6. soldermask
7. plated-drill
8. topsilk
9. bottomsilk
10. bottompaste
11. toppaste
12. topassembly
13. bottomassembly
14. fab

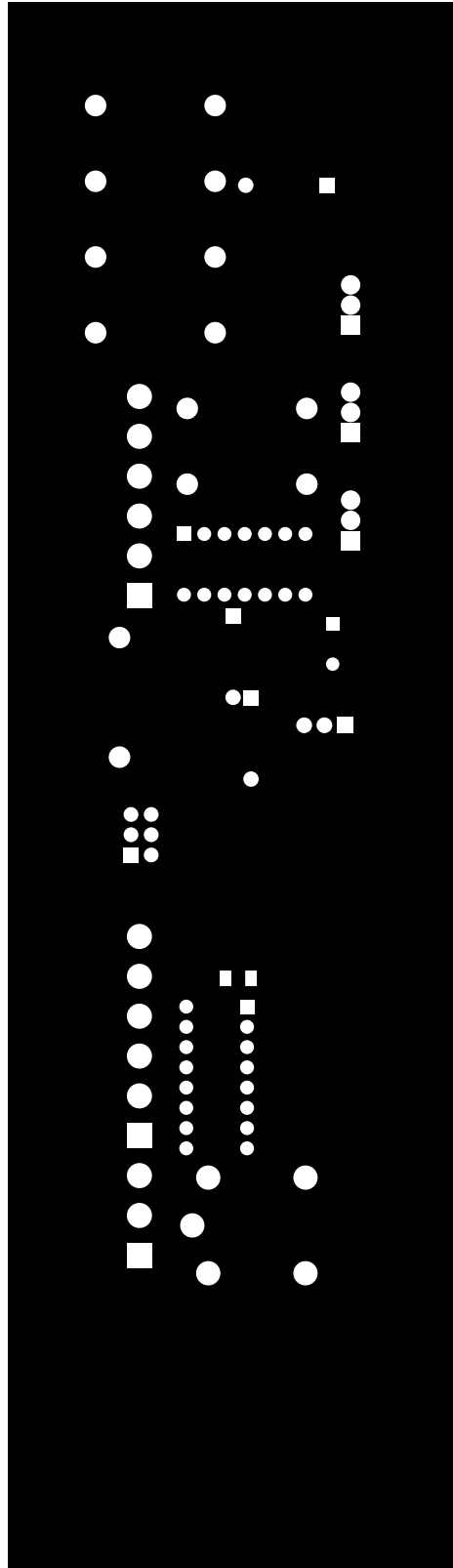


front (mirrored), scale = 1:1.080
bms55_master.pcb

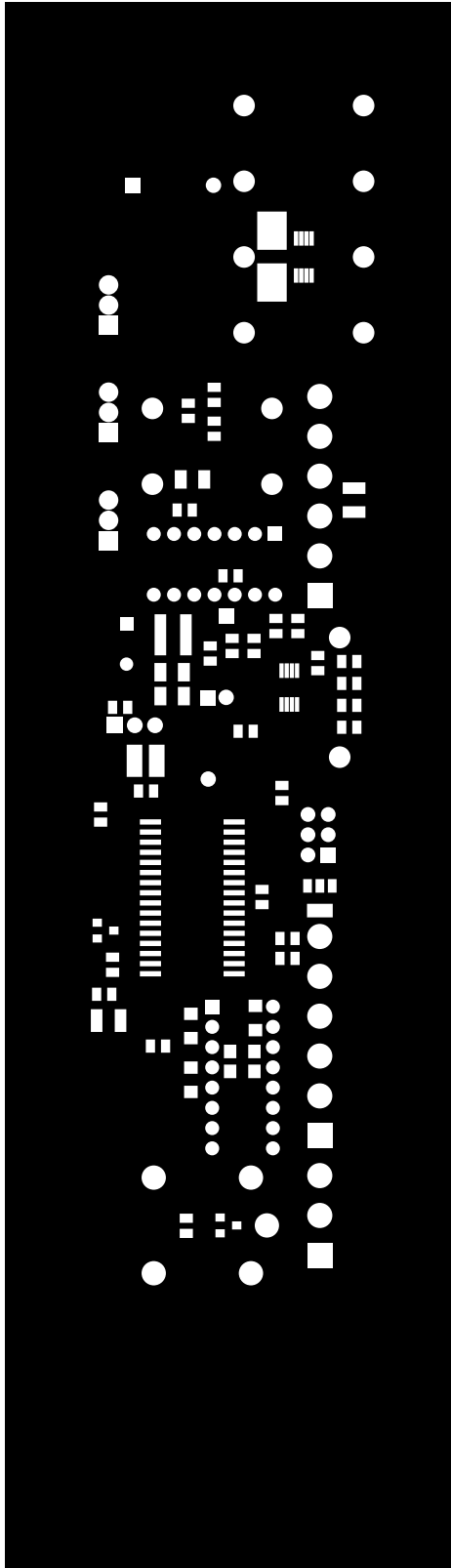


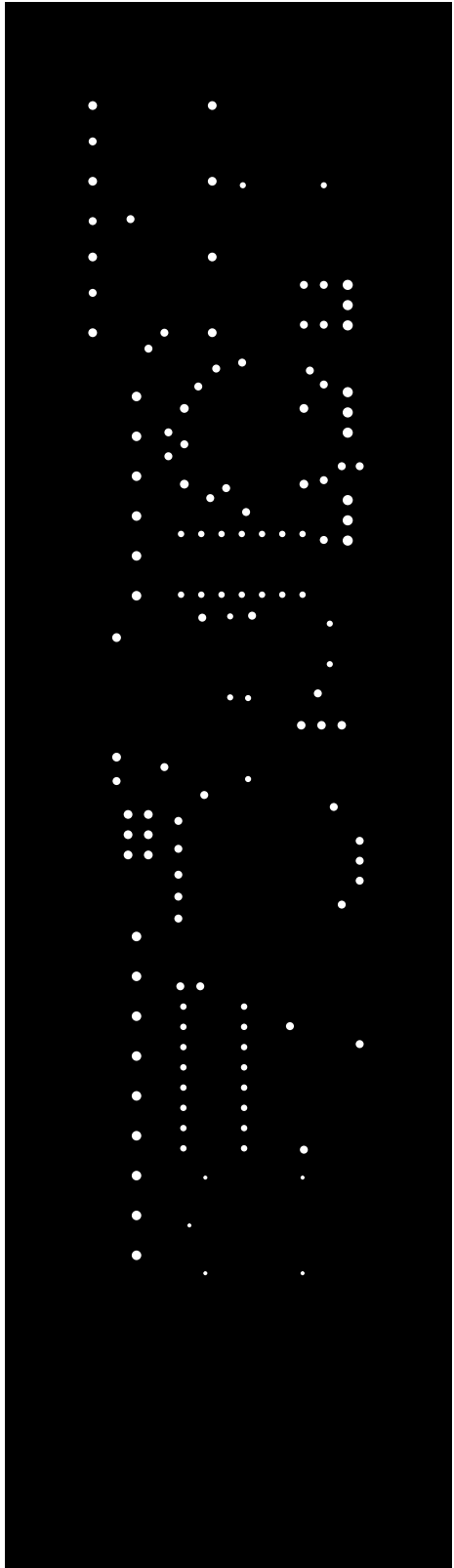


outline (mirrored), scale = 1:1.080
bms55_master.pcb

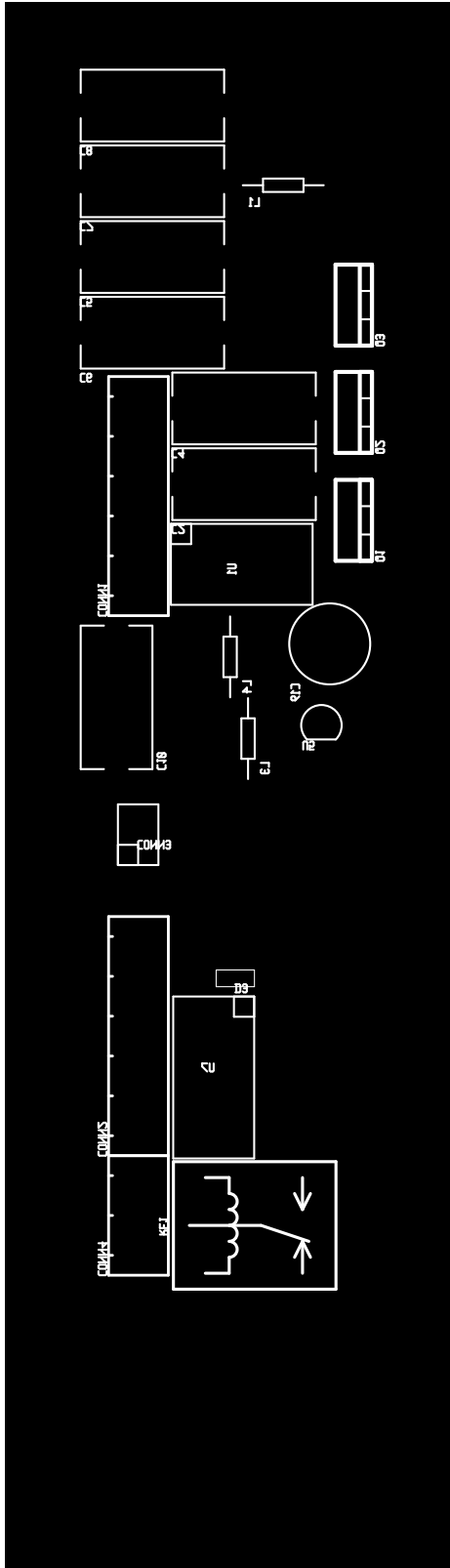


frontmask (mirrored), scale = 1:1.080
bms55_master.pcb

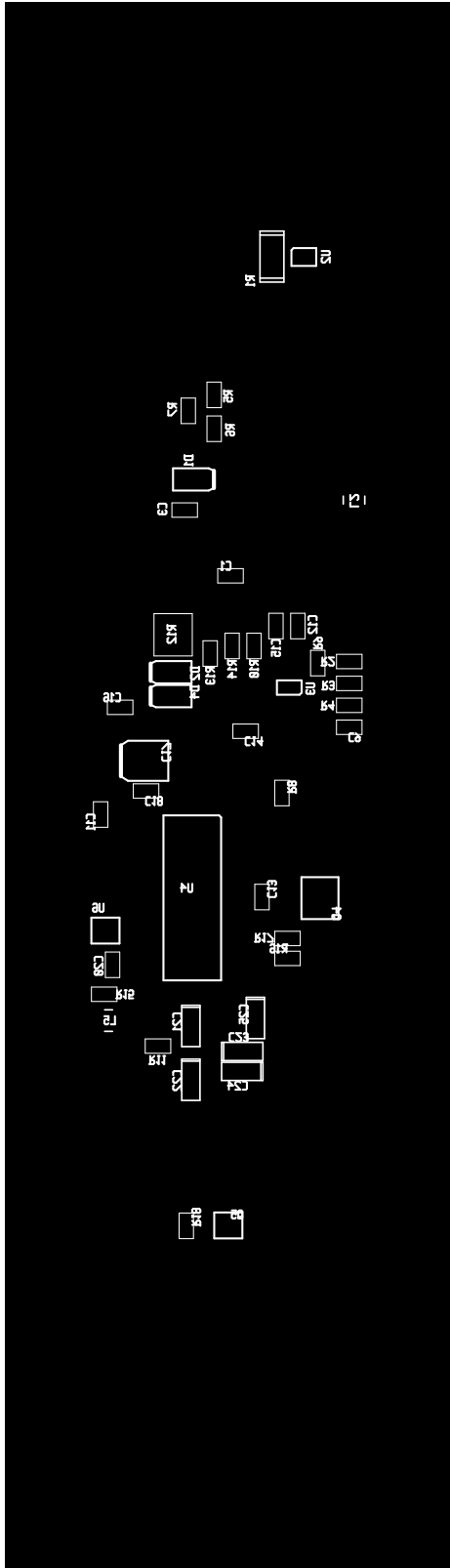


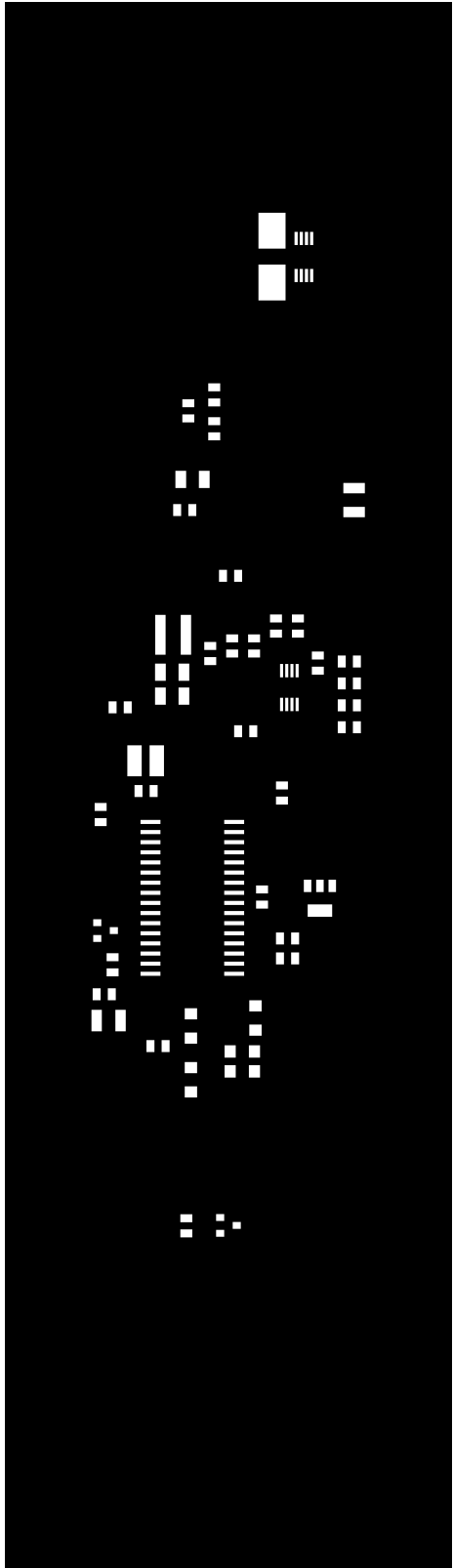


plated-drill (mirrored), scale = 1:1.080
bms55_master.pcb

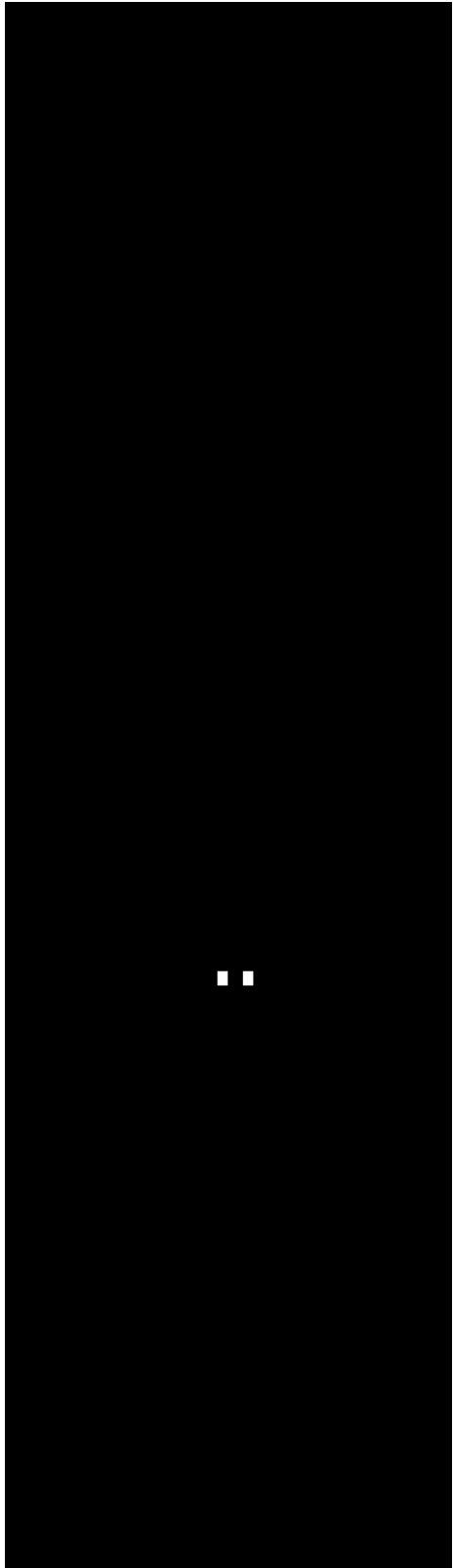


frontsilk (mirrored), scale = 1:1.080
 bms55_master.pcb

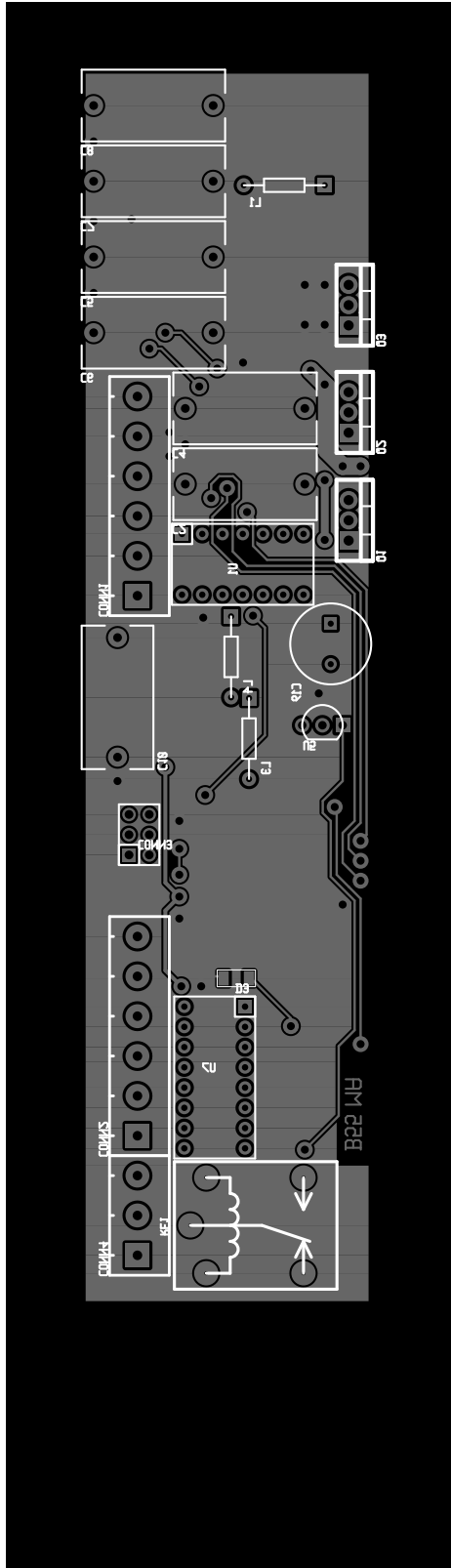




backpaste, scale = 1:1.080
bms55_master.pcb



frontpaste (mirrored), scale = 1:1.080
bms55_master.pcb



frontassembly (mirrored), scale = 1:1.080
 bms55_master.pcb

